

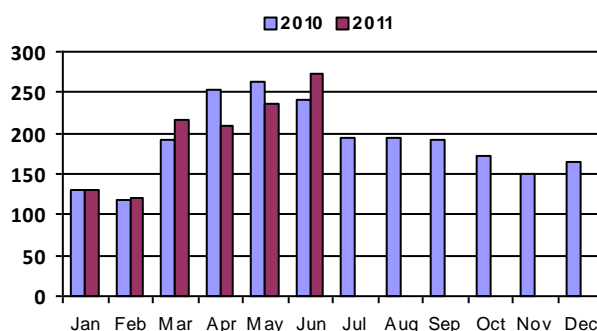
June 2011 - Real Estate Market Statistics



Denver Southeast - DSE

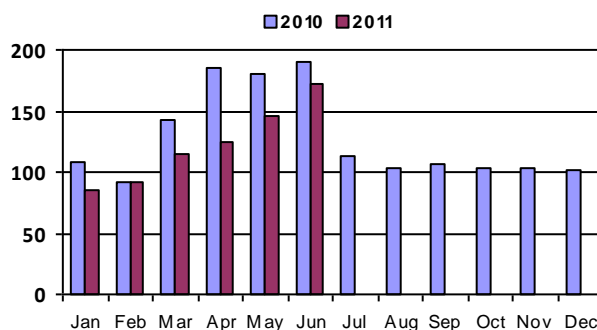
Closed Residential

Category	Jun-10	Jun-11	% Change
#Of Closed Sales - Month	240	274	14.2%
#Of Closed Sales - YTD	1,195	1,188	-0.6%
Avg. Days On Market	82	88	7.3%
# Of Active Listings	1,590	1,200	-24.5%
# Of NEW Listings	890	431	-51.6%
Absorption Rate (in months)	6.4	4.2	-35.2%
Average Price (Sold)	478,366	439,146	-8.2%



Closed Condo

Category	Jun-10	Jun-11	% Change
#Of Closed Sales - Month	190	172	-9.5%
#Of Closed Sales - YTD	897	735	-18.1%
Avg. Days On Market	106	143	34.9%
# Of Active Listings	1,329	1,003	-24.5%
# Of NEW Listings	532	261	-50.9%
Absorption Rate (in months)	6.8	6.	-11.8%
Average Price (Sold)	189,762	186,619	-1.7%



Land Title Guarantee Company

<http://www.ltgc.com>

Based on Information from Metrolist, Inc. for the period Jan 2009 through present. Note: This representation is based in whole or in part on data supplied by Metrolist, Inc. Metrolist, Inc. does not guarantee nor is in any way responsible for its accuracy. Data maintained by metrolist, Inc. may not reflect all real estate activity in the market.

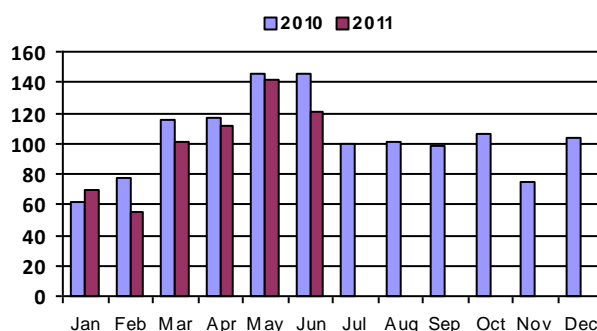
June 2011 - Real Estate Market Statistics



South Suburban Central - SSC

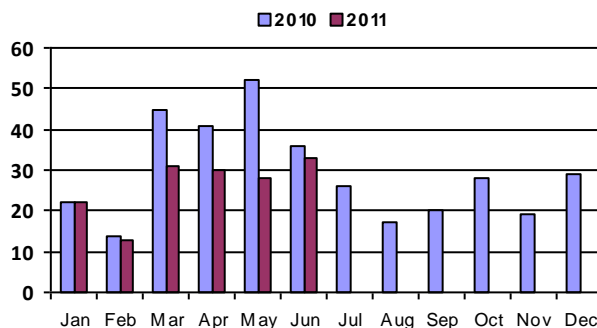
Closed Residential

Category	Jun-10	Jun-11	% Change
#Of Closed Sales - Month	145	121	-16.6%
#Of Closed Sales - YTD	662	599	-9.5%
Avg. Days On Market	78	98	25.6%
# Of Active Listings	656	556	-15.2%
# Of NEW Listings	367	213	-42.0%
Absorption Rate (in months)	4.2	4.5	7.3%
Average Price (Sold)	330,270	397,564	20.4%



Closed Condo

Category	Jun-10	Jun-11	% Change
#Of Closed Sales - Month	36	33	-8.3%
#Of Closed Sales - YTD	210	157	-25.2%
Avg. Days On Market	72	115	59.7%
# Of Active Listings	182	122	-33.0%
# Of NEW Listings	91	49	-46.2%
Absorption Rate (in months)	4.7	3.8	-20.4%
Average Price (Sold)	186,239	151,478	-18.7%



Land Title Guarantee Company

<http://www.ltgc.com>

Based on Information from Metrolist, Inc. for the period Jan 2009 through present. Note: This representation is based in whole or in part on data supplied by Metrolist, Inc. Metrolist, Inc. does not guarantee nor is in any way responsible for its accuracy. Data maintained by metrolist, Inc. may not reflect all real estate activity in the market.

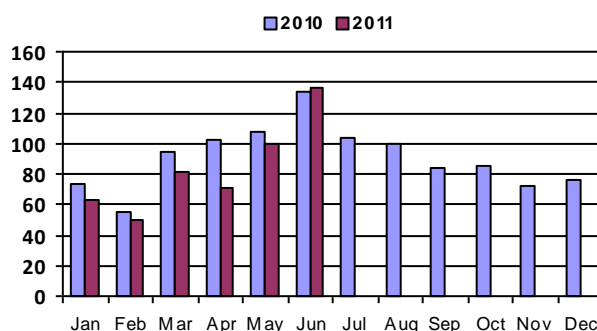
June 2011 - Real Estate Market Statistics



South Suburban East - SSE

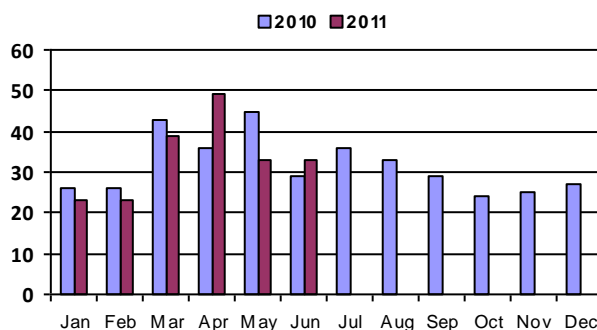
Closed Residential

Category	Jun-10	Jun-11	% Change
#Of Closed Sales - Month	134	137	2.2%
#Of Closed Sales - YTD	566	502	-11.3%
Avg. Days On Market	89	100	12.4%
# Of Active Listings	751	573	-23.7%
# Of NEW Listings	380	200	-47.4%
Absorption Rate (in months)	5.5	4.1	-26.3%
Average Price (Sold)	532,440	481,741	-9.5%



Closed Condo

Category	Jun-10	Jun-11	% Change
#Of Closed Sales - Month	29	33	13.8%
#Of Closed Sales - YTD	205	200	-2.4%
Avg. Days On Market	71	113	59.2%
# Of Active Listings	276	198	-28.3%
# Of NEW Listings	111	68	-38.7%
Absorption Rate (in months)	10.2	5.7	-44.3%
Average Price (Sold)	205,171	168,574	-17.8%



Land Title Guarantee Company

<http://www.ltgc.com>

Based on Information from Metrolist, Inc. for the period Jan 2009 through present. Note: This representation is based in whole or in part on data supplied by Metrolist, Inc. Metrolist, Inc. does not guarantee nor is in any way responsible for its accuracy. Data maintained by metrolist, Inc. may not reflect all real estate activity in the market.

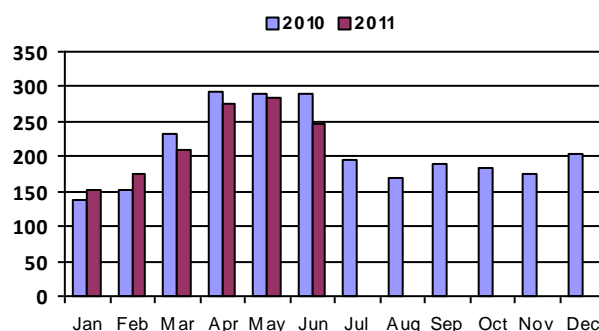
June 2011 - Real Estate Market Statistics



Aurora South - AUS

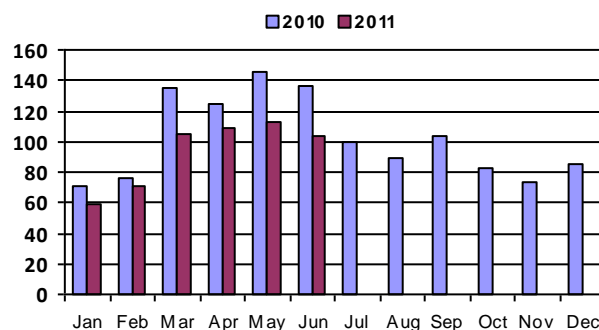
Closed Residential

Category	Jun-10	Jun-11	% Change
#Of Closed Sales - Month	291	246	-15.5%
#Of Closed Sales - YTD	1,399	1,343	-4.0%
Avg. Days On Market	64	85	32.8%
# Of Active Listings	1,067	711	-33.4%
# Of NEW Listings	610	351	-42.5%
Absorption Rate (in months)	3.3	3.	-8.2%
Average Price (Sold)	198,371	180,241	-9.1%



Closed Condo

Category	Jun-10	Jun-11	% Change
#Of Closed Sales - Month	137	103	-24.8%
#Of Closed Sales - YTD	690	560	-18.8%
Avg. Days On Market	68	107	57.4%
# Of Active Listings	488	329	-32.6%
# Of NEW Listings	251	127	-49.4%
Absorption Rate (in months)	3.3	3.6	9.1%
Average Price (Sold)	102,934	87,422	-15.1%



Land Title Guarantee Company

<http://www.ltgc.com>

Based on Information from Metrolist, Inc. for the period Jan 2009 through present. Note: This representation is based in whole or in part on data supplied by Metrolist, Inc. Metrolist, Inc. does not guarantee nor is in any way responsible for its accuracy. Data maintained by metrolist, Inc. may not reflect all real estate activity in the market.

June 2011 - Real Estate Market Statistics

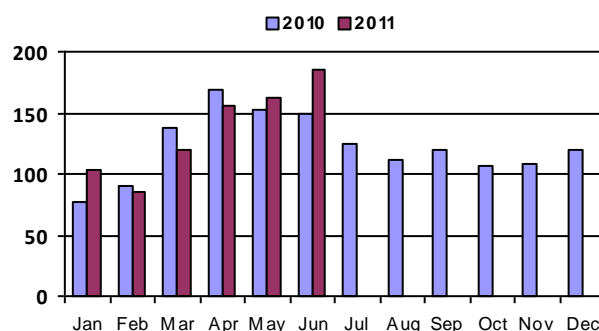


Douglas Highlands Ranch Lone Tree - DHL

Includes - Highlands Ranch, Lone Tree

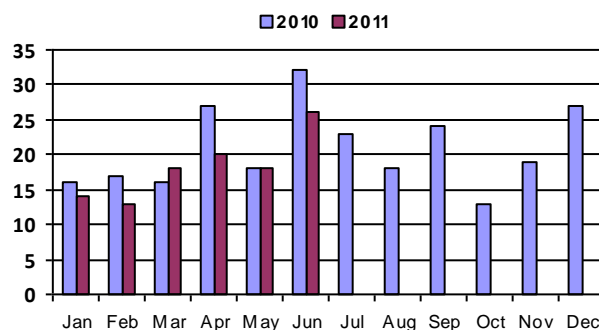
Closed Residential

Category	Jun-10	Jun-11	% Change
#Of Closed Sales - Month	149	185	24.2%
#Of Closed Sales - YTD	774	811	4.8%
Avg. Days On Market	71	75	5.6%
# Of Active Listings	761	601	-21.0%
# Of NEW Listings	426	227	-46.7%
Absorption Rate (in months)	5.	3.3	-32.4%
Average Price (Sold)	390,600	347,831	-10.9%



Closed Condo

Category	Jun-10	Jun-11	% Change
#Of Closed Sales - Month	32	26	-18.8%
#Of Closed Sales - YTD	126	109	-13.5%
Avg. Days On Market	96	82	-14.6%
# Of Active Listings	133	127	-4.5%
# Of NEW Listings	52	44	-15.4%
Absorption Rate (in months)	4.8	4.8	-0.1%
Average Price (Sold)	228,614	250,428	9.5%



Land Title Guarantee Company

<http://www.ltgc.com>

Based on Information from Metrolist, Inc. for the period Jan 2009 through present. Note: This representation is based in whole or in part on data supplied by Metrolist, Inc. Metrolist, Inc. does not guarantee nor is in any way responsible for its accuracy. Data maintained by metrolist, Inc. may not reflect all real estate activity in the market.

June 2011 - Real Estate Market Statistics

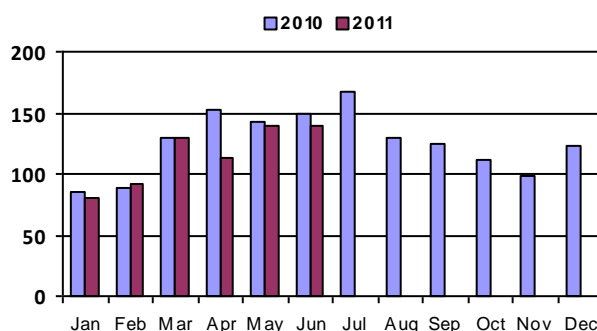


Douglas County West - DCW

Includes - Castle Rock, Larkspur, Sedalia, Palmer Lake, part of Littleton

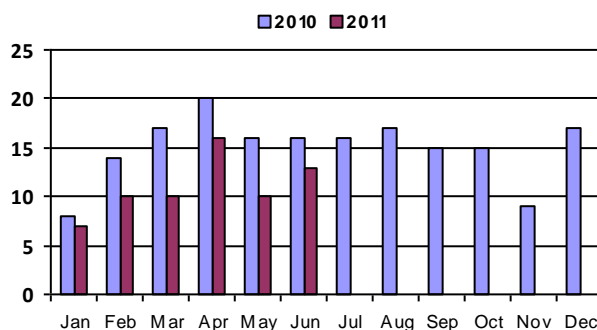
Closed Residential

Category	Jun-10	Jun-11	% Change
#Of Closed Sales - Month	150	139	-7.3%
#Of Closed Sales - YTD	749	692	-7.6%
Avg. Days On Market	103	180	74.8%
# Of Active Listings	1,256	1,139	-9.3%
# Of NEW Listings	442	316	-28.5%
Absorption Rate (in months)	8.2	7.9	-4.0%
Average Price (Sold)	430,272	400,174	-7.0%



Closed Condo

Category	Jun-10	Jun-11	% Change
#Of Closed Sales - Month	16	13	-18.8%
#Of Closed Sales - YTD	91	66	-27.5%
Avg. Days On Market	48	92	91.7%
# Of Active Listings	109	77	-29.4%
# Of NEW Listings	49	31	-36.7%
Absorption Rate (in months)	6.5	5.8	-11.2%
Average Price (Sold)	143,938	145,614	1.2%



Land Title Guarantee Company

<http://www.ltgc.com>

Based on Information from Metrolist, Inc. for the period Jan 2009 through present. Note: This representation is based in whole or in part on data supplied by Metrolist, Inc. Metrolist, Inc. does not guarantee nor is in any way responsible for its accuracy. Data maintained by metrolist, Inc. may not reflect all real estate activity in the market.

June 2011 - Real Estate Market Statistics

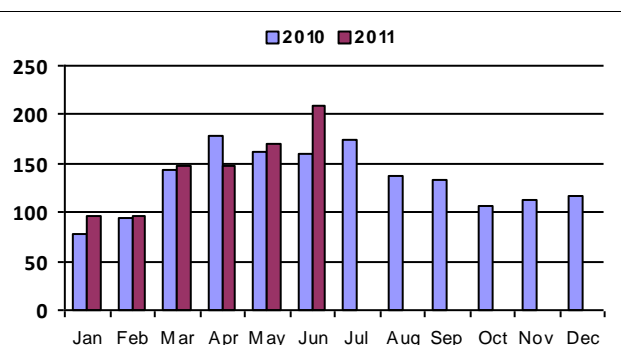


Douglas Elbert Parker - DEP

Includes - Parker, Elizabeth, Franktown, Kiowa, Elbert, Deer Trail, Simla

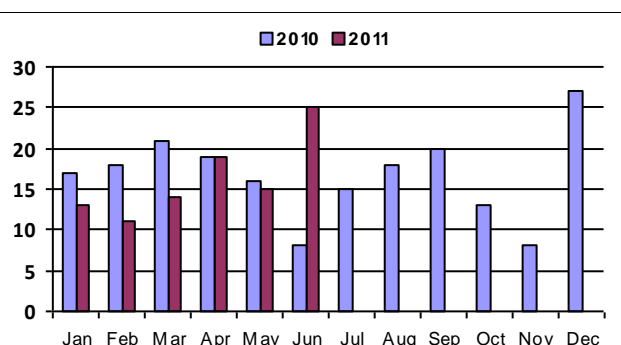
Closed Residential

Category	Jun-10	Jun-11	% Change
#Of Closed Sales - Month	160	210	31.3%
#Of Closed Sales - YTD	815	870	6.7%
Avg. Days On Market	89	120	34.8%
# Of Active Listings	1,195	892	-25.4%
# Of NEW Listings	484	266	-45.0%
Absorption Rate (in months)	7.	4.2	-39.7%
Average Price (Sold)	316,775	341,104	7.7%



Closed Condo

Category	Jun-10	Jun-11	% Change
#Of Closed Sales - Month	8	25	212.5%
#Of Closed Sales - YTD	99	97	-2.0%
Avg. Days On Market	45	144	220.0%
# Of Active Listings	141	63	-55.3%
# Of NEW Listings	68	26	-61.8%
Absorption Rate (in months)	15.3	2.8	-81.9%
Average Price (Sold)	136,050	159,648	17.3%



Land Title Guarantee Company

<http://www.ltgc.com>

Based on Information from Metrolist, Inc. for the period Jan 2009 through present. Note: This representation is based in whole or in part on data supplied by Metrolist, Inc. Metrolist, Inc. does not guarantee nor is in any way responsible for its accuracy. Data maintained by metrolist, Inc. may not reflect all real estate activity in the market.