



One Cherry Lane Pricing

Morellos - Plan 701 - Ranch

Approximate square footage 2,788

Everything you need is in this well designed ranch. The open design leads you from the foyer to the expansive great room with its 10' stone façade fireplace and wall of windows and doors leading to the rear private courtyard ideal for entertaining. An additional patio with a built-in grill is located off the hearth room and gourmet kitchen. The master suite features the ambiance of a warm fireplace, his and her walk-in closets, double vanity and the luxury of an over-sized shower and jetted-soaking tub. Add to this a private study, formal dining room and second bedroom suite with private bath, 3- car split garage and full basement and you have the perfect living experience. (More living space can be added with an optional upgrade 3rd bedroom and bath finish in the lower level.)

Base priced from **\$1,261,000**

Morellos II- Plan 701E - Ranch Two Story

Approximate square footage 3,601

Take all of the exquisite features of the Morellos ranch plan, and add a wonderful second story with two more bedrooms, each with its own private bath, and an open balcony and library that overlooks the great room below. The same dramatic courtyard entry, living areas and superb design of the main level are greatly enhanced by the addition of the upper level living areas. The three car garage is the same split design as above.

Base priced from **\$1,457,000**

Lambert - Plan 702 - Main Floor Master

Approximate square footage 3,551

The exceptional design of this main floor master lies in the outside living space being such an integral part of the home. The light filled kitchen, great room and formal dining room all surround a unique open, heated courtyard with its built-in grill in the center of this home. A large partially covered private patio is located in the back of the great room adding more space to the wonderfully open floor plan. While the main floor master suite and bath are carefully located away from the living center of the home to allow for privacy, it still has the convenience of main floor living. Two secondary bedrooms are located on the upper level, each with a private bath. The split three car garage, and main floor laundry room make this a complete home for every occasion.

Base priced from **\$1,447,000**

Ranier - Plan 704 - Ranch

Approximate square footage 3,996

This home is designed, not only for the optimum experience of entertaining friends and family, but also for the active and busy life style. The front courtyard and stunning foyer ushers you into the world of style, elegance and openness. It is designed with a formal dining room, exceptional kitchen complete with hearth room, fireplace and eating nook, and a great room which is truly worthy of it's name. The rear oversized courtyard and covered patio, with built-in grill, are accessed from the great room through a wall of sliding doors which integrates the outdoor living space inside and adds to the ambiance. The master suite is privately tucked away from the main living areas just past the nook library. The suite features separate sitting and sleeping area with fireplace and wet bar. The master bath includes his and hers separate closets, vanity areas and oversized double-door shower. The secondary guest suites are located on the opposite side of the house. A private study with its own powder room and access from the front courtyard, a huge laundry room conveniently located off of the master bedroom closet, a separate mud room and split 3-car garage, rounds out the amenities of this home.

Base priced from **\$1,886,000**

Cerise- Plan 705 - Main Floor Master

Approximate square footage 3,866

Once you pass the front tower and the grand courtyard and enter the impressive foyer of the Cerise, you begin to realize how extraordinary this home is. Designed as a main floor master, with two additional bedroom suites, central loft and retreat on the second level, the Cerise is a perfect blend of elegance, privacy and functionality. The main floor focal point is the two story circular gallery in the center of the home which opens to all the family living areas - kitchen, breakfast room, great room, dining room, den and foyer. A private hall from the gallery leads the way to the main floor master suite complete with corner fireplace, his and her closets and the ultimate five-piece bath. Traveling upstairs you arrive at the central loft area from which two additional bedroom suites are located - one on each side of the house. And from the loft is the access to the second story deck leading to a totally private retreat. An additional patio, built-in gas grill, convenient laundry room and 3-car garage add still more to the many standard features of this home. The ability to add an optional elevator for even more convenience, is just one more reason to call this home.

Base priced from **\$1,390,000**

****Prices subject to change without notice. Effective 10/15/08**



Where premium is the standard.....

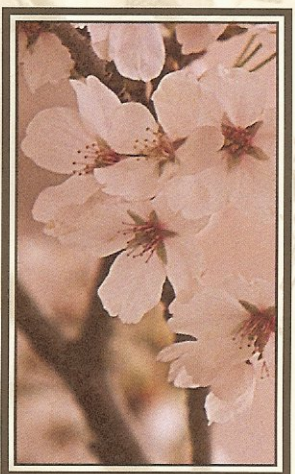
- ◆ Custom designed exterior elevations
 - ◆ *Robinson Rock*[®] or *Robinson Brick*[®] exterior finishes (per plan)
 - ◆ *Monier*[®] Concrete tile roof
 - ◆ Individually designed front yard landscaping
 - ◆ *Andersen*[®] energy efficient 400 series windows
 - ◆ Custom front entry door
 - ◆ Three-car garages
 - ◆ Customized cedar overlay garage doors
 - ◆ Full unfinished basements
 - ◆ Concrete Structural basement floors
 - ◆ Minimum of 10' ceiling heights
 - ◆ *Lennox*[®] 90% high efficiency gas furnace
 - ◆ *Lennox*[®] Air Conditioning system
 - ◆ Crown molding in Dining room, Study, and Master Suite
 - ◆ Wide Plank Hardwood Flooring
 - ◆ Travertine Flooring in Master Bath
 - ◆ Slab granite countertops in Master Bath
 - ◆ Oversized Master Bath Shower with custom-poured shower pan
 - ◆ *Kohler*[®] jetted tub in Master Bath
 - ◆ His & Her walk-in closets (per plan)
 - ◆ His & Her commodes (per plan)
 - ◆ Slab granite counter tops throughout kitchen
 - ◆ *Irpinia*[®] custom cabinetry throughout home
 - ◆ *Wolf/Sub Zero*[®] kitchen appliances including;
 - 36" Stainless Steel Range top
 - Stainless Steel Wall Hood
 - Stainless Steel Oven
 - Stainless Steel Microwave
 - Stainless Steel Dishwasher
 - Stainless Steel Warming Drawer
 - ◆ Climate-controlled under-counter Wine Cooler
 - ◆ Butler Pantry and/or Wet bar
 - ◆ Built-in Patio BBQ Grill
 - ◆ *Kohler*[®] fixtures and faucets throughout home
 - ◆ Gas Fireplaces with surrounds in all great rooms per plan
 - ◆ Fireplace surround and mantle in all master bedrooms and hearth rooms per plan
 - ◆ Designer lighting packages
 - ◆ Hand troweled interior wall finishes
 - ◆ *Espritech* High tech wiring package including pre-wiring for Security, audio and computer.
 - ◆ Front courtyards with private tower entry
 - ◆ Stamped and colored concrete on patios and courtyards
 - ◆ Driveways are brushed concrete with accent borders
 - ◆ Wrought Iron interior and exterior railings, gates and decorative elements
 - ◆ Manned Front Entry
- Unlimited professional design assistance available through
Builders Showcase Interiors

Standard Features are subject to change without notice. Please check with your Sales Counselor.

IT'S NO COINCIDENCE THAT WE BUILT ONE CHERRY LANE. IT WAS AN IDEA WHOSE TIME HAD COME.

Sometimes, all the right pieces just fall magically into place. So it is with One Cherry Lane. It began with an unbelievable opportunity. A rare piece of land, a jewel really, located in an area of the Denver Tech Center so perfectly situated that it is one of the most elegant addresses in Greenwood Village. ❧ We then assembled our team of creative, innovative architects, designers, fabricators, and manufacturers. It was this collaboration, never settling for anything less than the very best, that gave One Cherry Lane its absolute uniqueness. They created a neighborhood of custom-crafted homes reflecting the artistry, tradition and reputation that

Espirit Homes has built since it was established in 1989. ❧ The Bar Award for Best Custom Home design in 2002 honored our commitment to meeting and exceeding the expectations of our buyers. But what really sets us apart, next to our innovative designs and award-winning quality construction, is that we listen. We hear our customers. And we respond to their needs. In the end, what we've created is the most luxurious and remarkably extraordinary collection of homes you'll find anywhere in Colorado. This is the philosophy behind One Cherry Lane, and as far as we're concerned, it's exactly the right idea at exactly the right time. ❧



WHEN YOU LIVE AN EXTRAORDINARY LIFE, SHOULDN'T YOUR HOME REFLECT IT?



Imagine walking into a new home that feels like everything you've ever dreamed of. That's the philosophy behind the classic architectural designs of the homes that make up this neighborhood, One Cherry Lane.

From the moment you drive through the gated entrance of this elegantly landscaped, garden wonderland, you'll feel like you've escaped into a world of your own. Quiet. Elegant. Peaceful.

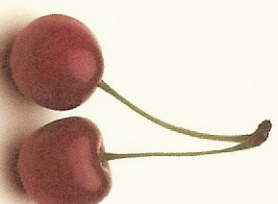
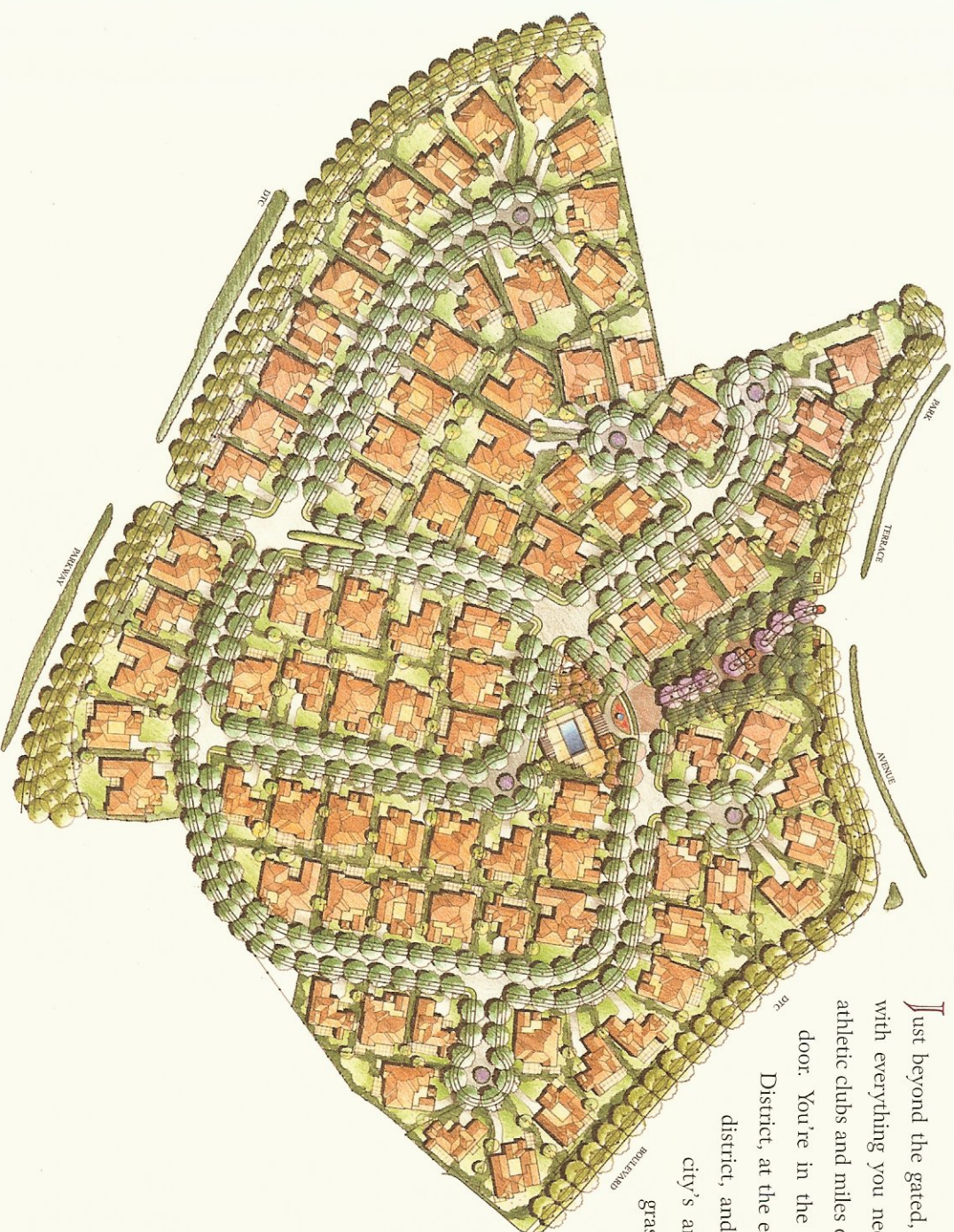
Rich textural stone, brick and stucco exteriors gracefully line the winding curves of each tree-lined street. These are Courtyard Homes the way they were meant to be, uniquely reflecting the individual character, taste, and style of their owners.

Inside, you'll find nothing short of extraordinary. Marble, granite, and stone appointments accentuate the elegance. Expansive floor-to-ceiling windows frame scenic views onto graceful Courtyards bringing the outdoors in. The feeling of the entire home is breathtaking.

Bright. Open. Flowing. Worry-free. Magnificently intelligent.
Beyond your expectations. All are standard features of One Cherry Lane.

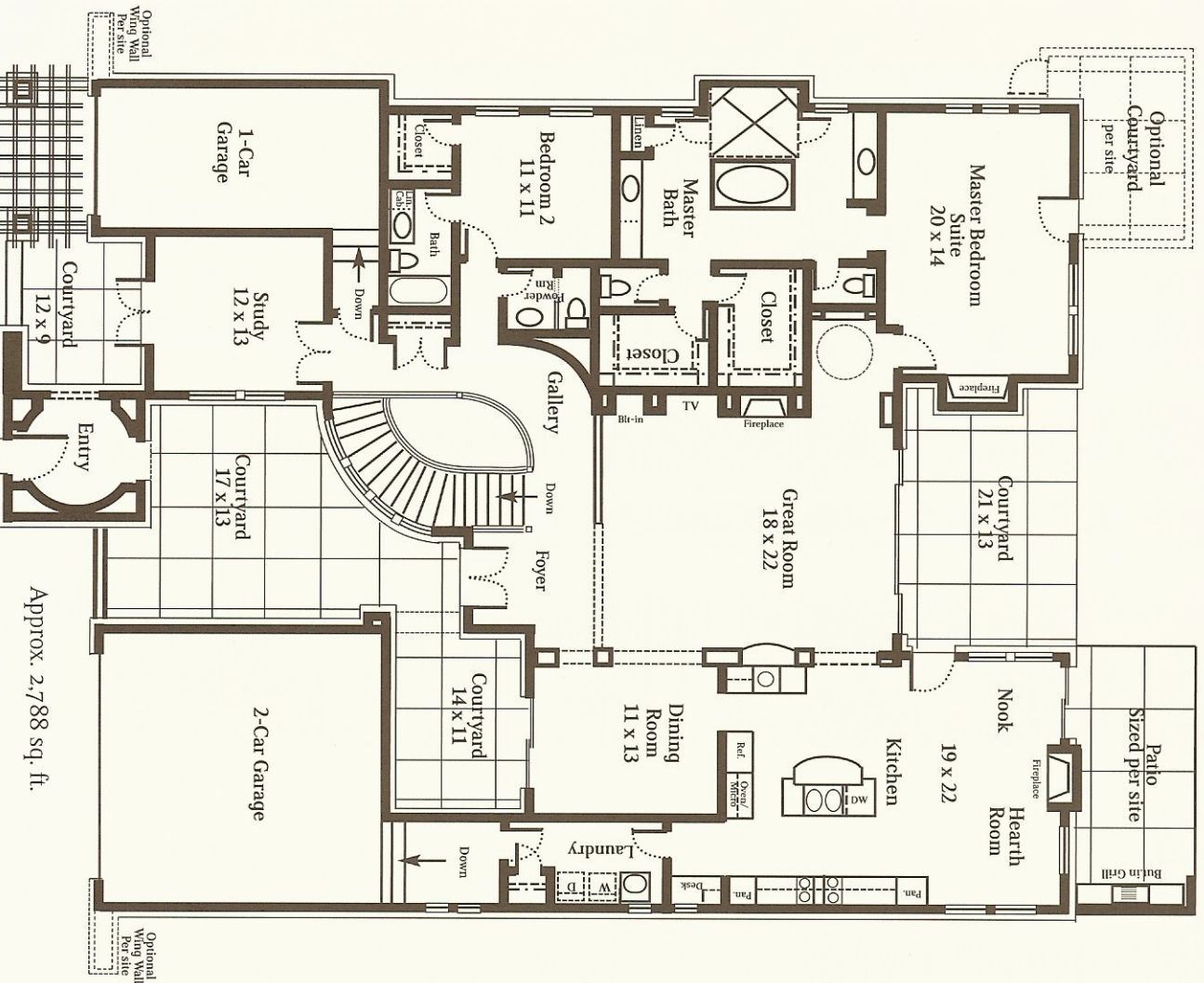
HOW TO BE WORLD'S APART, AND STILL IN THE CENTER OF EVERYTHING.

Just beyond the gated, quiet, serenity of this neighborhood is a world with everything you need. Convenient shopping and dining, state-of-the-art athletic clubs and miles of walking, running and biking trails are out your door. You're in the center of the award-winning Cherry Creek North District, at the edge of the commanding Denver Tech Center. A short drive from downtown and the heart of the city's arts and entertainments centers. It's all within grasp. As is the ability to turn it all off within the gates of this neighborhood, lusciously appointed with gracious landscaping and a private pool. Here you can have it all, exactly the way you want it. *One Cherry Lane. Truly a world apart.*



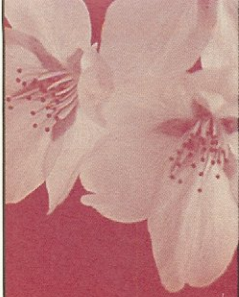


MORELLOS

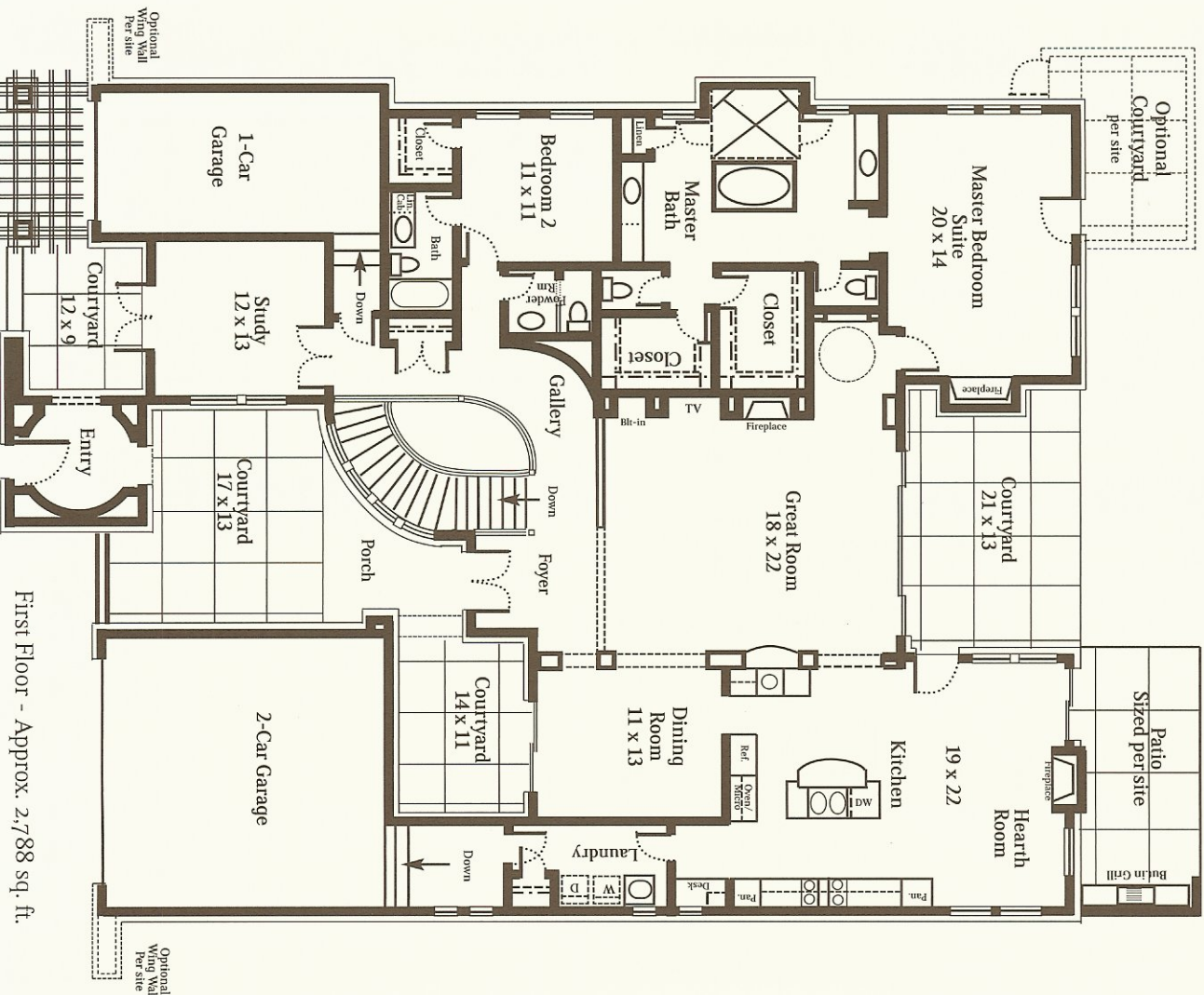


The Morellos ranch is all about gracious living — from the front foyer opening to the expansive great room, which features a wall of windows and doors, to the rear private courtyard that invites the outside living areas to become a part of everyday living. The gourmet kitchen with hearth room and the gracious dining room add to the entertaining spaces, while the welcoming study adds to the intimacy of the Morellos ranch. The private master suite has the ambiance of a warm fireplace, and a master bath with a luxurious over-sized shower and jetted soaking tub, double closets and vanities. This perfect living experience is completed by the secondary bedroom suite with private bath, 3-car split garage and full basement.

Ranch, Approximately 2,788 sq. ft.



MORELLOS II



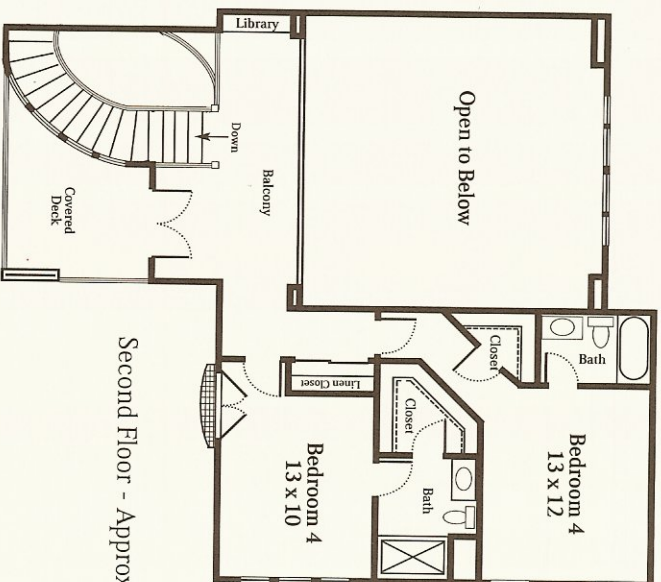
First Floor - Approx. 2,788 sq. ft.

Take all of the gracious features of the Morellos ranch plan with its advantage of main-floor living and add a second story. The spacious second story features two additional bedroom suites, each with their own bathroom, expanding the living space of the Morellos' II into a 4-bedroom home. The balcony and library overlooking the great room accentuates the openness of this beautifully designed home. Like the ranch plan, Morellos II has the same gourmet kitchen, hearth room and superb master bedroom suite as integral parts of this home. The outside is again brought into the living area through the many courtyards and patios designed in this one-of-a-kind floor plan.

Main Floor Master, Approximately 3,601 sq. ft.

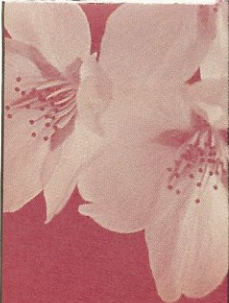
FEATURES:

- ✧ Rock or brick and stucco custom exterior finishes
- ✧ Concrete tile roof
- ✧ Front yard landscaping
- ✧ Three-car garage
- ✧ Full unfinished basement
- ✧ Concrete structural basement floor
- ✧ High efficiency gas furnace
- ✧ Air conditioning
- ✧ His & her walk-in closets
- ✧ His & her commodes
- ✧ Slab granite countertops throughout kitchen
- ✧ Kitchen appliances including: stainless steel range top, wall hood, oven, microwave, dishwasher and warming drawer
- ✧ Butlers pantry and/or wet bar
- ✧ Built-in patio BBQ grill
- ✧ Gas fireplaces in great room and master bedroom
- ✧ Designer lighting packages
- ✧ Espritech high tech wiring package including pre-wiring for security, audio and computer
- ✧ Front courtyard with private tower entry
- ✧ Wrought iron interior and exterior railings, gates and decorative elements
- ✧ Manned front entry to community
- ✧ Community pool and cabana

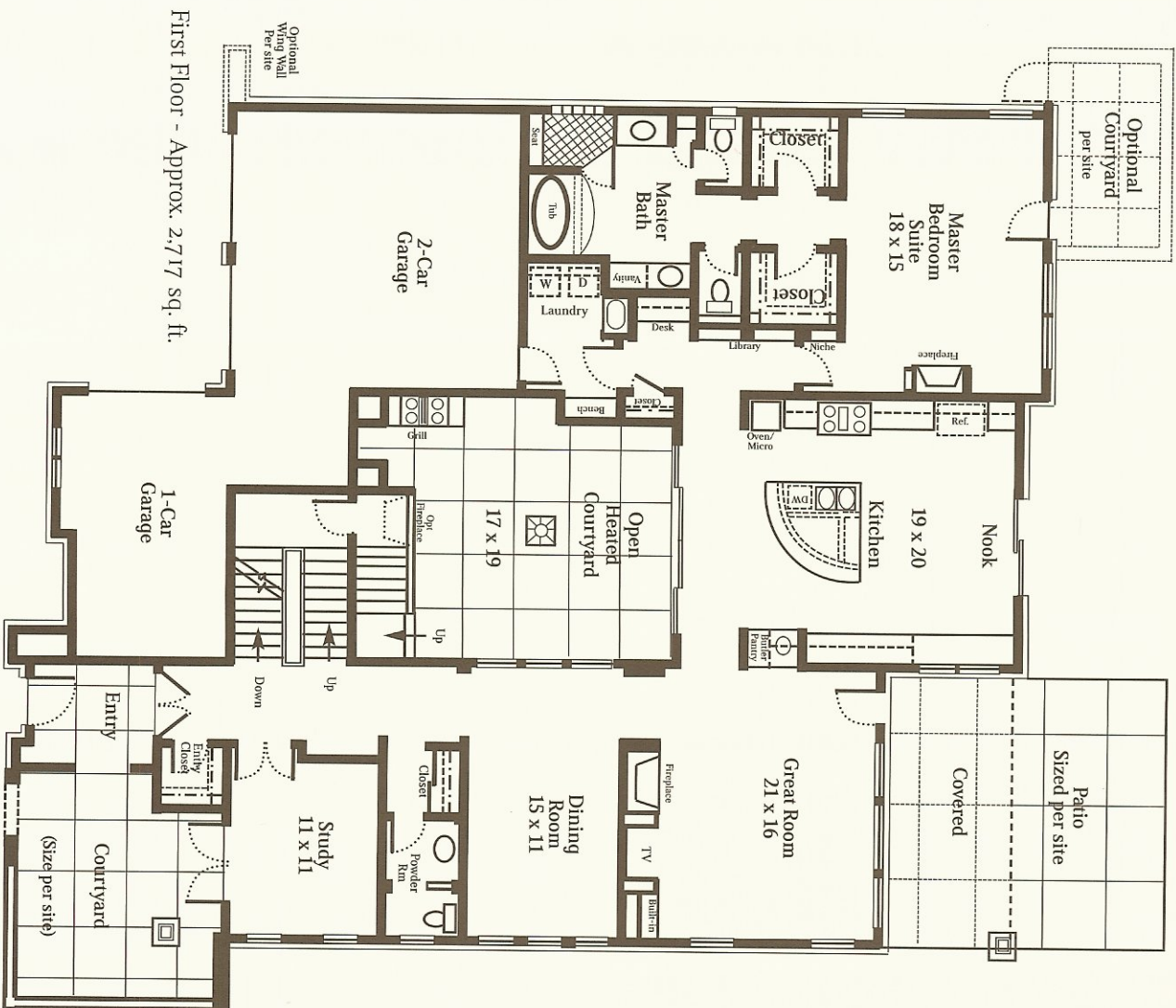


Second Floor - Approx. 813 sq. ft.

In an effort to continuously improve our homes, we reserve the right to change or modify floor plans and specifications without notice or obligation. Floor plans and elevations are artist's conceptions only. All room dimensions and square footages are approximate. 8/05



LAMBERT

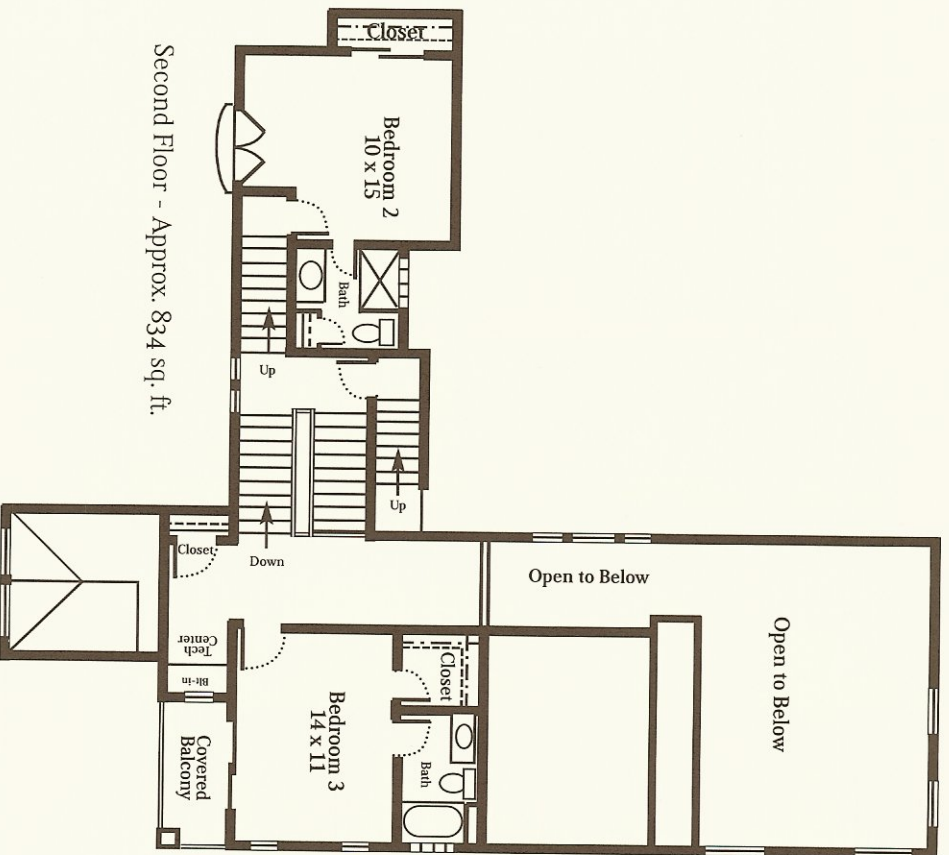


The Lambert's distinctive main floor master design makes this home's magnificent outside living spaces an integral part of the floor plan. A unique open, heated center courtyard is the focal point of the home, surrounded by the Lambert's light filled kitchen, great room and formal dining room. The master suite, which features an extraordinary master bath with his and hers walk-in closets and commodes, is carefully located away from the main living and entertaining areas to allow for maximum privacy. Completing the main floor is a cozy private study and adjacent powder room. Located upstairs are two additional bedroom suites, each with a private bath. The Lambert is a perfect combination of openness and privacy, all in one home.

Main Floor Master, Approx 3,551 sq. ft.

FEATURES:

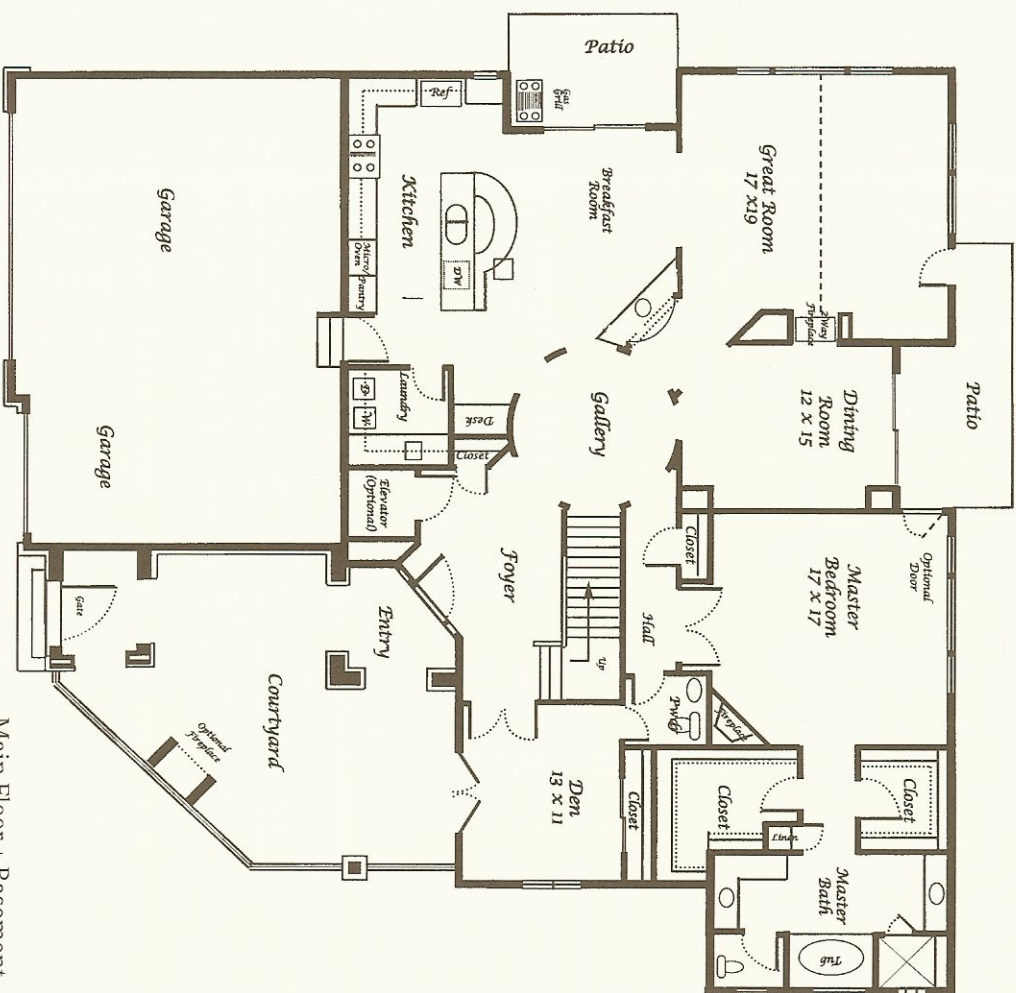
- ❖ Rock or brick and stucco custom exterior finishes
- ❖ Concrete tile roof
- ❖ Front yard landscaping
- ❖ Three-car garage
- ❖ Full unfinished basement
- ❖ Concrete structural basement floor
- ❖ High efficiency gas furnace
- ❖ Air conditioning
- ❖ His & her walk-in closets
- ❖ His & her commodes
- ❖ Slab granite countertops throughout kitchen
- ❖ Kitchen appliances including: stainless steel range top, wall hood, oven, microwave, dishwasher and warming drawer
- ❖ Butlers pantry and/or wet bar
- ❖ Built-in patio BBQ grill
- ❖ Gas fireplaces in great room and master bedroom
- ❖ Designer lighting packages
- ❖ Espriotech high tech wiring package including pre-wiring for security, audio and computer
- ❖ Front courtyard with private tower entry
- ❖ Wrought iron interior and exterior railings, gates and decorative elements
- ❖ Manned front entry to community
- ❖ Community pool and cabana



Second Floor - Approx. 834 sq. ft.

In an effort to continuously improve our homes, we reserve the right to change or modify floor plans and specifications without notice or obligation. Floor plans and elevations are artist's conceptions only. All room dimensions and square footages are approximate. 8/05

CERISE



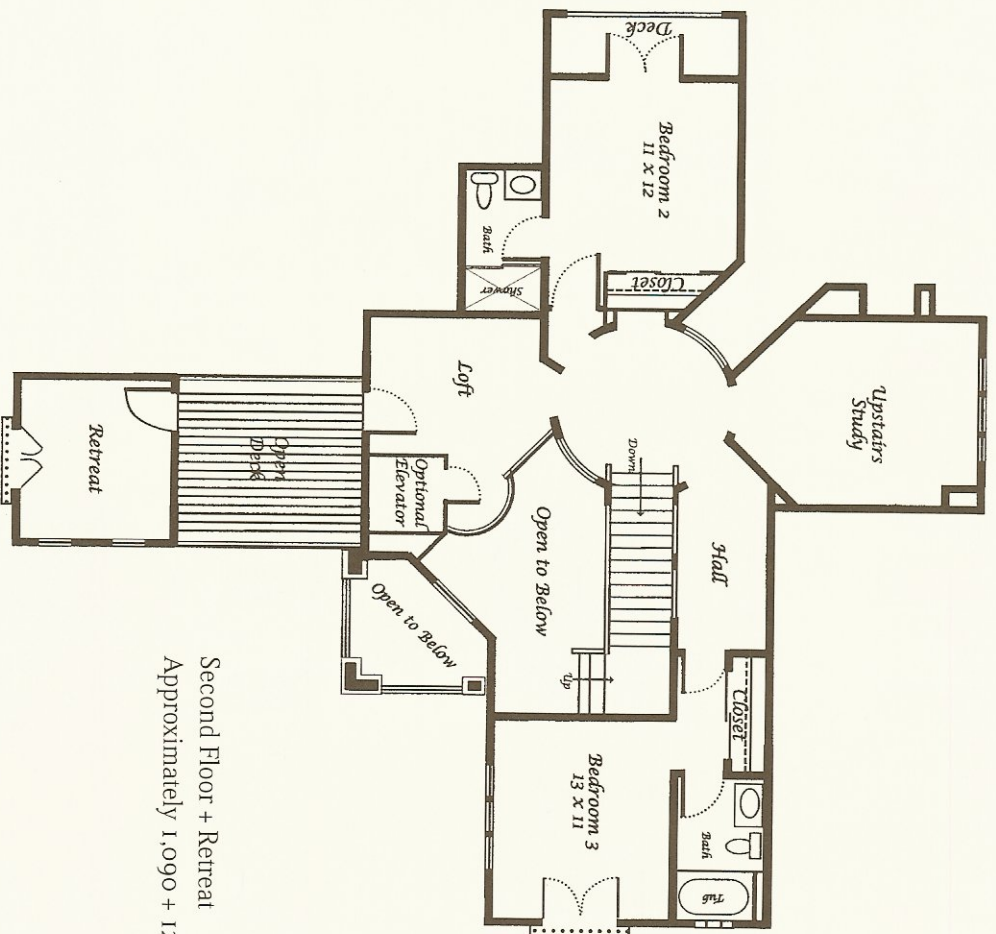
Main Floor + Basement
Approximately 2,511 + 144 sq. ft.

Once you pass the front tower and the grand courtyard and enter the impressive foyer of the Cerise, you begin to realize how extraordinary this home is. Designed as a main floor master with two additional bedroom suites, an upper study, loft and retreat on the second level, the Cerise is a perfect blend of elegance, privacy and functionality. The main floor focal point is the two story circular gallery in the center of the home, which opens to all the family living areas – kitchen, breakfast room, great room, dining room, den and foyer. A private hall from the gallery leads the way to the main floor master suite complete with a corner fireplace, his and her closets and the ultimate five-piece bath. Traveling upstairs you arrive at the central gallery loft area from which two additional bedroom suites are located - one on each side of the house. From the gallery loft you can access the second-story study, upper deck and private retreat. An additional patio, built-in gas grill, convenient laundry room and three-car garage add still more to the many standard features of this home. The ability to add an optional elevator for even more convenience is just another reason to call the Cerise your home.

Main Floor Master, Approximately 3,866 sq. ft.

FEATURES:

♦ Rock or brick and stucco custom exterior

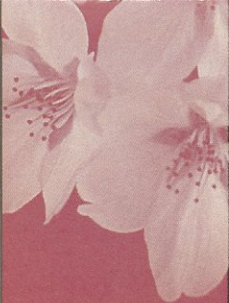


Second Floor + Retreat
Approximately 1,090 + 121 sq. ft.

finishes

- ✦ Concrete tile roof
- ✦ Front yard landscaping
- ✦ Three-car garage
- ✦ Full unfinished basement
- ✦ Concrete structural basement floor
- ✦ High efficiency gas furnace
- ✦ Air conditioning
- ✦ His & her walk-in closets
- ✦ Slab granite countertops throughout kitchen
- ✦ Kitchen appliances including: stainless steel range top, wall hood, oven, microwave, dishwasher and warming drawer
- ✦ Butlers pantry and/or wet bar
- ✦ Built-in patio BBQ grill
- ✦ Gas fireplaces in great room and master bedroom
- ✦ Designer lighting packages
- ✦ Esprietch high tech wiring package including pre-wiring for security, audio and computer
- ✦ Front courtyard with private tower entry
- ✦ Wrought iron interior and exterior railings, gates and decorative elements
- ✦ Manned front entry to community
- ✦ Community pool and cabana

In an effort to continuously improve our homes, we reserve the right to change or modify floor plans and specifications without notice or obligation. Floor plans and elevations are artist's conceptions only. All room dimensions and square footages are approximate. 9/08



RANIER

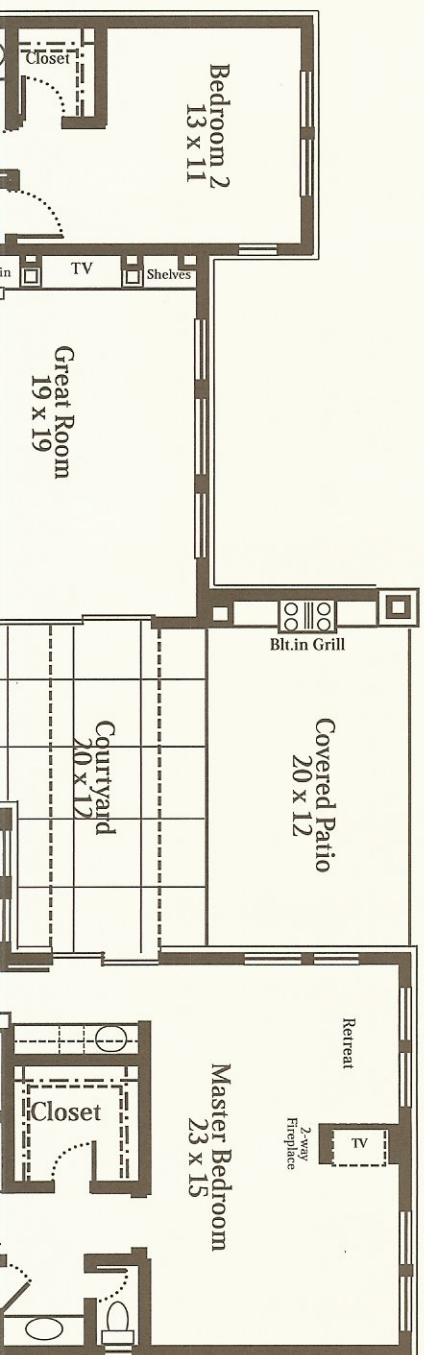


The elegance of this grand home unfolds as the front courtyard and dramatic foyer welcomes friends and family. The graciousness carries on through this home in the warmth of the two-way fireplace located between the dining room and the great room. The charm continues in the kitchen fit for a gourmet chef; in the study with a private entrance and bath; and finally in the matchless great room, fit for a grand piano. Adding to the stateliness is the exquisite master suite complete with sitting room and sleeping area separated by a two-way fireplace and media center. The master bath features double commodes and vanity areas, extravagant his and her walk-in closets, and a generous sized shower and jetted tub. The rear, private, covered patio and courtyard with built-in grill are adjacent to all living areas, allowing entertaining to be a highlight of living in this beautiful home.

Ranch, Approximately 3,996 sq. ft.

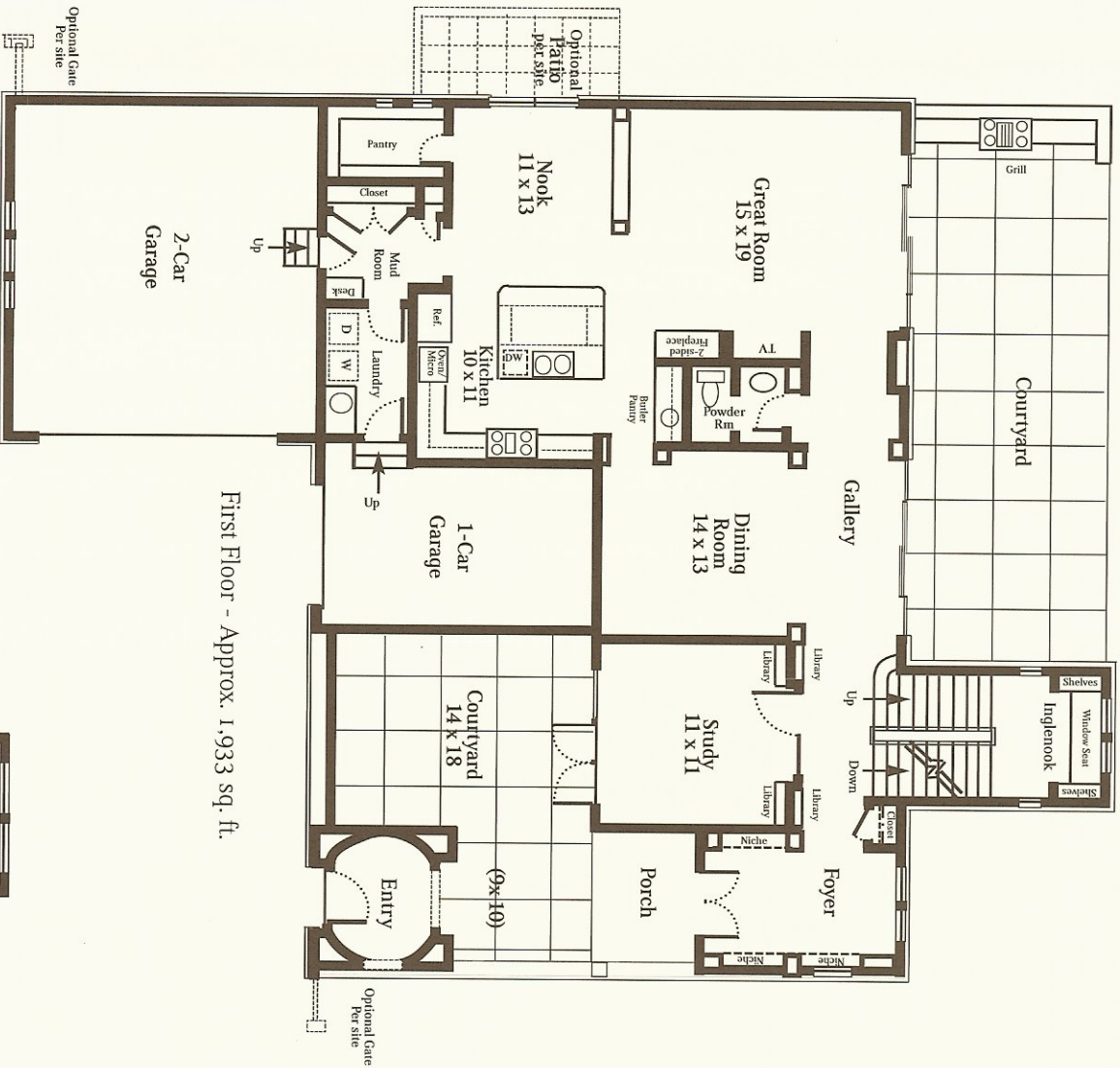
FEATURES:

- ✧ Rock or brick and stucco custom exterior finishes
- ✧ Concrete tile roof
- ✧ Front yard landscaping
- ✧ Three-car garage
- ✧ Full unfinished basement
- ✧ Concrete structural basement floor
- ✧ High efficiency gas furnace
- ✧ Air conditioning
- ✧ His & her walk-in closets
- ✧ His & her commodes
- ✧ Slab granite countertops throughout kitchen
- ✧ Kitchen appliances including: stainless steel range top, wall hood, oven, microwave, dishwasher and warming drawer
- ✧ Butlers pantry and/or wet bar
- ✧ Built-in patio BBQ grill
- ✧ Gas fireplaces in great room and master bedroom
- ✧ Designer lighting packages
- ✧ Espritech high tech wiring package including pre-wiring for security audio and computer
- ✧ Front courtyard with private tower entry
- ✧ Wrought iron interior and exterior railings, gates and decorative elements
- ✧ Manned front entry to community pool and cabana



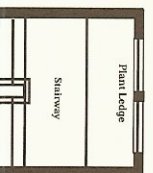


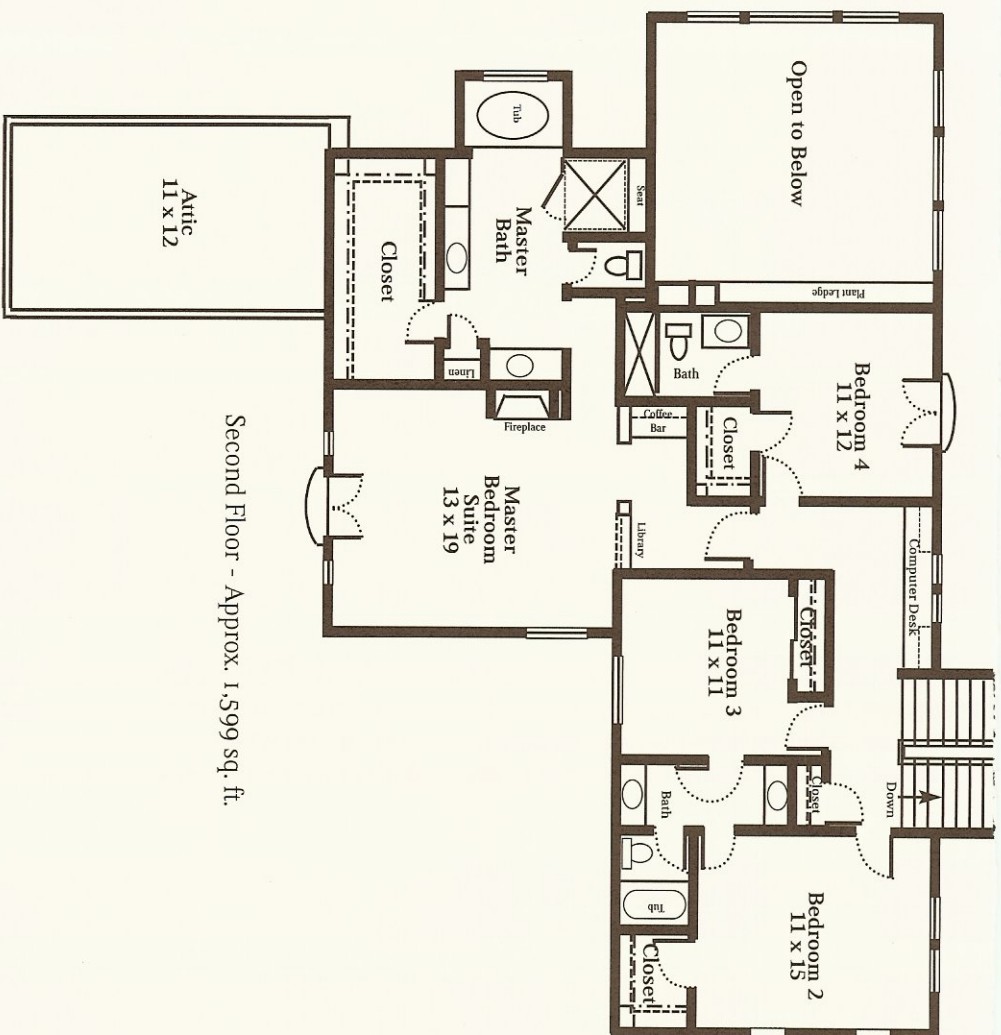
ELTON



The classic two-story Elton welcomes all with a gracious front courtyard and porch that escorts them into a home perfect for family living. The first floor design focuses on an impressive gallery—one side opening to a private study, formal dining room, and gourmet kitchen with breakfast nook and the other opening to the extended living space of another courtyard ideal for entertaining. Upon climbing the open staircase, past the cozy Inglenook, the master suite lies complete with an inviting fireplace and private library with built-in coffee bar. Completing the second floor of this home are the three additional secondary bedroom suites each containing their own bathrooms.

Classic Two Story, Approximately 3,532 sq. ft.





Second Floor - Approx. 1,599 sq. ft.

FEATURES:

- ✧ Rock or brick and stucco custom exterior finishes
- ✧ Concrete tile roof
- ✧ Front yard landscaping
- ✧ Three-car garage
- ✧ Full unfinished basement
- ✧ Concrete structural basement floor
- ✧ High efficiency gas furnace
- ✧ Air conditioning
- ✧ Slab granite countertops throughout kitchen
- ✧ Kitchen appliances including: stainless steel range top, wall hood, oven, microwave, dishwasher and warming drawer
- ✧ Butlers pantry and/or wet bar
- ✧ Built-in patio BBQ grill
- ✧ Gas fireplaces in great room and master bedroom
- ✧ Designer lighting packages
- ✧ Espritech high tech wiring package including pre-wiring for security, audio and computer
- ✧ Front courtyard with private tower entry
- ✧ Wrought iron interior and exterior railings, gates and decorative elements
- ✧ Manned front entry to community
- ✧ Community pool and cabana

In an effort to continuously improve our homes, we reserve the right to change or modify floor plans and specifications without notice or obligation. Floor plans and elevations are artist's conceptions only. All room dimensions and square footages are approximate. 8/05